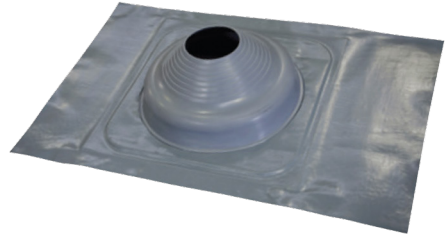


# ACRYLEAD TILE FLASH



Acrylead Tile Flash has a thermo baked acrylic primer coating, ready for finish coating to match surrounding colours.

- Best option for concrete/clay tile roofs
- Complies with AS1804 and has a minimum unit mass of 17kg/m<sup>2</sup>
- Withstands temperatures from -50°C to 115°C and up to 150°C intermittently
- Not for use with zinc/aluminium coated pressed metal tiles



Code	Pipe OD (mm)	Base (mm)	Roof Pitch
TFL0-35	0-35	300 x 600	Up to 45°
TFL0-35TWIN	0-35 x 2	300 x 600	
TFL5-55	5-55	300 x 600	
TFL50-70	50-70	300 x 600	
TFL5-127	5-127	400 x 600	
TFL75-175	75-175	450 x 600	
TFL150-300	150-300	600 x 900	

